

SAFETY AND SCHOOL ENVIRONMENT

Non-CSAP Course Offerings

Your School Offers	does	does not
• art.....	<input checked="" type="checkbox"/>	<input type="checkbox"/>
• drama or theater.....	<input checked="" type="checkbox"/>	<input type="checkbox"/>
• music.....	<input checked="" type="checkbox"/>	<input type="checkbox"/>
• physical education.....	<input checked="" type="checkbox"/>	<input type="checkbox"/>
• opportunity for civic or community engagement.....	<input checked="" type="checkbox"/>	<input type="checkbox"/>
• internet safety program.....	<input type="checkbox"/>	<input checked="" type="checkbox"/>
• International Baccalaureate.....	<input type="checkbox"/>	<input checked="" type="checkbox"/>
• extracurricular activities.....	<input checked="" type="checkbox"/>	<input type="checkbox"/>
• athletics.....	<input checked="" type="checkbox"/>	<input type="checkbox"/>
• preschool program.....	<input type="checkbox"/>	<input checked="" type="checkbox"/>
• full-day kindergarten program.....	<input type="checkbox"/>	<input checked="" type="checkbox"/>
• before-and-after-school care program.....	<input checked="" type="checkbox"/>	<input type="checkbox"/>

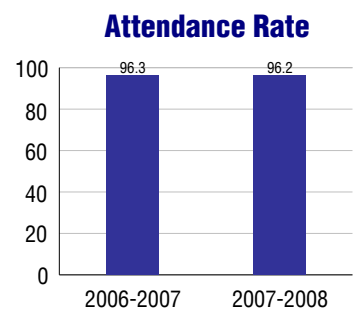
Safety and Discipline

Safe schools are a top priority for parents, teachers, and communities. Your school safety and discipline record for the 2007-2008 school year is:

Type of Incident	Number of Incidents Reported	Percent of Total Incidents
Substance Abuse - Drugs		
Substance Abuse - Alcohol		
Substance Abuse - Tobacco		
Felony Assaults		
Fights		
Possession of Dangerous Weapons		
Other Violations Code of Conduct	3	100.0%

Student Attendance and School Calendar

2007-2008	Your School
Enrollment	582
Average Daily Attendance	560
Student Dropouts	N/A



Student Information Over Time

	2005-2006	2006-2007	2007-2008
Student Enrollment Stability	100%	100.0%	99.3%
Students Eligible for Free and Reduced Lunch	5.1 %	4.1 %	3.6 %

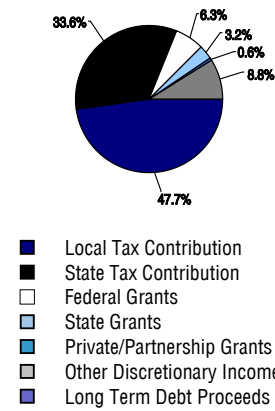
For more information and further details about this report, visit www.state.co.us/schools
 Colorado Department of Education, 201 East Colfax Ave. Denver, CO 80203
Liberty Common Charter School
 1550/5120/E
 1725 Sharpe Point Drive . Fort Collins, CO 80525 . 970-482-9800
 10/20/2008

DISTRICT TAXPAYER'S REPORT

Sources of School District Revenue 2007

Local Tax Contribution	\$114,250,638
State Tax Contribution	80,427,619
Federal Grants	15,050,605
State Grants	7,563,555
Private/Partnership Grants	1,336,324
Other Discretionary Income	21,077,908
Total District Operating Revenue	\$239,706,649
Long Term Debt Proceeds	0
Total District Revenue	\$239,706,649
Total District Operating Revenue Per Pupil =	\$10,027
Total District Revenue Per Pupil (Including Long Term Debt) =	\$10,027
District Per Pupil Operating Revenue =	\$5,711
State Average Per Pupil Operating Revenue =	\$6,080

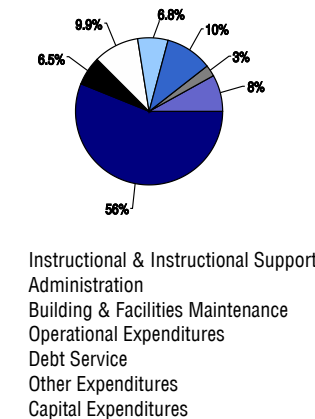
District Source of Funds 2007



District Use of Funds 2007

Instructional & Instructional Support	\$140,809,614
Administration	16,345,848
Building & Facilities Maintenance	24,946,494
Operational Expenditures	16,978,954
Debt Service	25,233,553
Other Expenditures	6,325,146
Total District Operating Expenditures	\$230,639,609
Capital Expenditures	20,503,549
Total District Use of Funds	\$251,143,158

District Use of Funds 2007



District Debt and Capital Construction & Equipment

Total Outstanding Bonded Debt	\$238,809,466
Average Annual Percentage Interest Rate on Debt	4.42%
Amount Raised from Most Recent Bond	\$175,000,000
Amount Spent on New Buildings During Last 2 Years	\$37,207,317

Accreditation

Accreditation is Colorado's primary accountability system, incorporating achievement levels, academic growth, achievement gaps, post-secondary readiness, improvement planning, and compliance. The state accredits districts and districts accredit individual schools.

District Accreditation Status for the 2007-2008 school year:

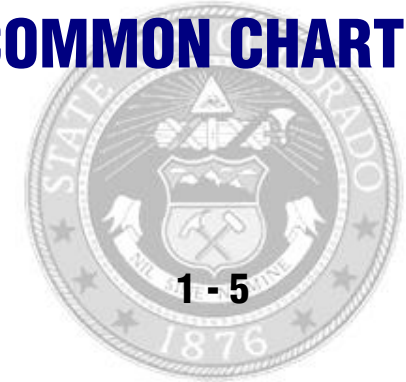
Voter Approved Funding Changes

Your community did /did not hold an election in November 2006

The following items have been approved by voters:

- TABOR Override
- Bond
- Mill Levy Increase

LIBERTY COMMON CHARTER SCHOOL



POUDRE R-1
Charter

<http://www.psdschools.org/>
School Accountability Report
2007-2008 School Year

School Performance Summary

Overall Academic Performance on State Assessments **Excellent**

Academic Growth of Students **Typical**

Winner of a John Irwin School of Excellence for the 2007-2008 School Year

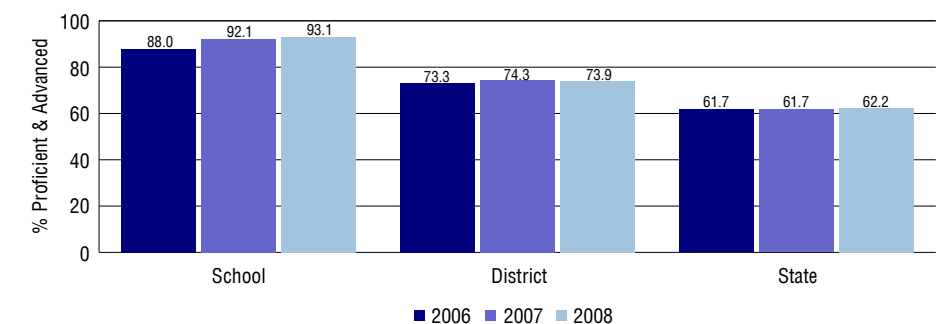
Overall Academic Performance on State Assessments

Each school in the State received a rating of "Excellent", "High", "Average", "Low", or "Unsatisfactory" for student academic performance based on 2007-2008 CSAP and COACT results. The rating is calculated using weighted percentages of each CSAP proficiency level for all content area and grade results for the school, as well as average COACT Reading, Writing, and Math Grade 11 results.

Academic Growth of Students

Each school in the State received a rating of "Low", "Typical", or "High" for student academic growth based on CSAP results. The calculation method is new for 2007-2008. The rating is calculated using student percentile scores matched over two years. More information about the Overall Academic Performance rating and Academic Growth of Students calculations can be found here: http://www.cde.state.co.us/cdeassess/SAR_Info.html.

Percent Proficient and Advanced for Elementary Grades for All Content Areas



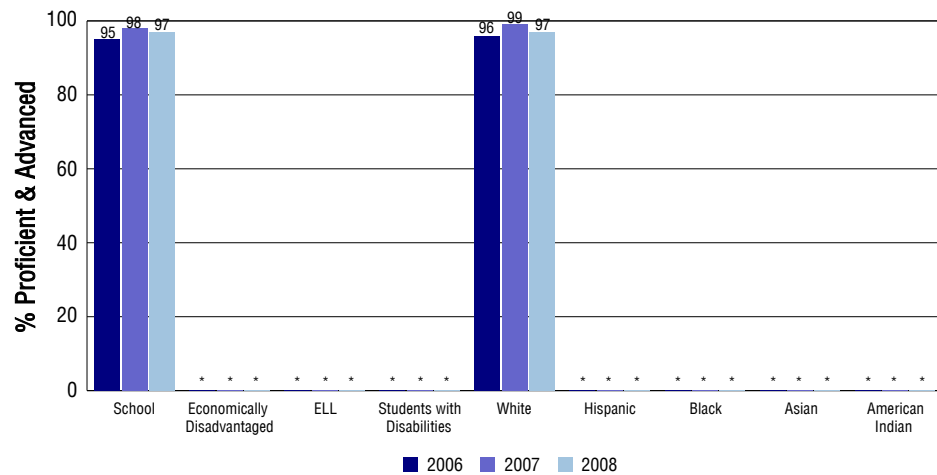
Student Test Scores Used For Calculating Overall Academic Performance

99.0%	Test Scores Counted
0.5%	Test Scores not used due to Language
0.5%	Test Scores not used due to New Student

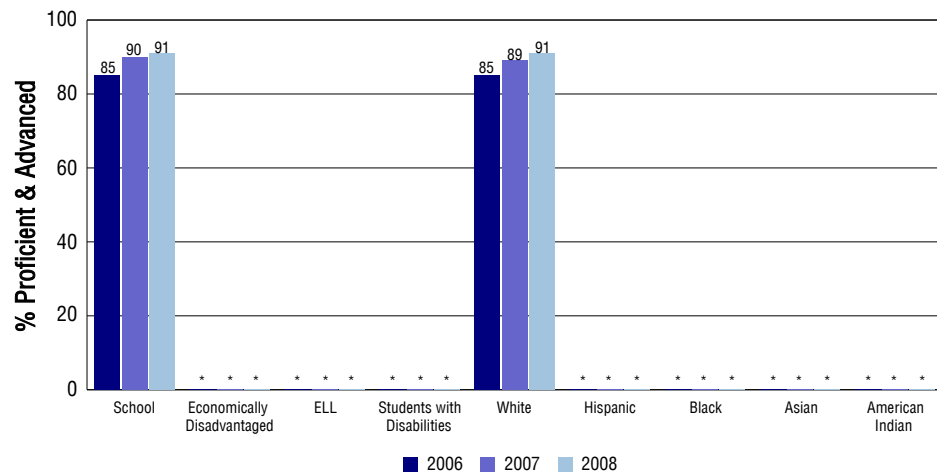
STUDENT PERFORMANCE

These graphs show the percent Proficient and Advanced trends over the past three years for Reading, Writing, and Math. Results are presented for the entire school for all reported grades as well as for different subgroups. Note: * indicates any group with less than 16 student results to be reported.

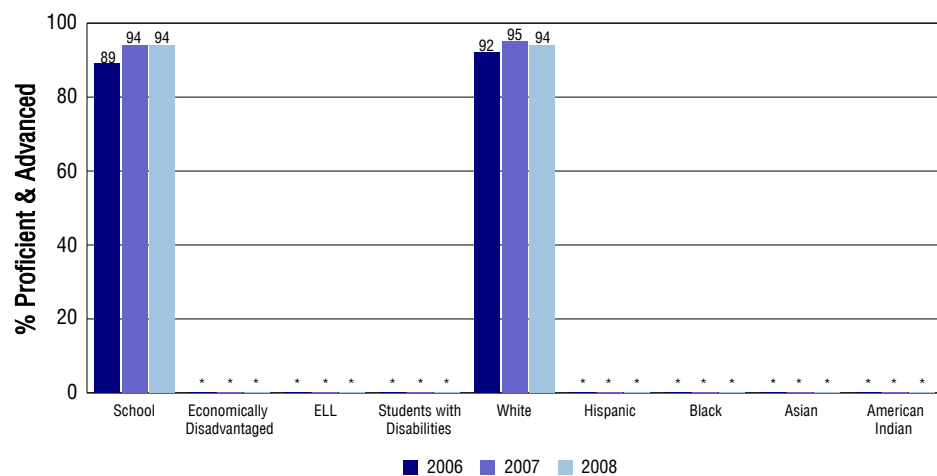
Reading



Writing



Math



SCHOOL INFORMATION

School Pride (as submitted by your district)

- A Nationally recognized Blue Ribbon School, 2007 National Charter School of the Year, National Core Knowledge Visitation Site, 2007 State Lego Robotics Champion
- All or our teachers are certified or highly qualified.
- Liberty Common School uses an innovative "Pay for Performance" plan for all teachers.
- We strive for excellence in all endeavors: Academics, Athletics, Music, Art, Student Council, Community Service and Character Education.

School Goals (as submitted by your district)

We strive to have all our students at or above grade level proficiency in Math, Science, English (reading and writing) and History. Liberty Common School will analyze the data from classroom assignments, CSAP (Colorado Student Assessment Program) tests, and NWEA (Northwest Evaluation Association) tests, and then make curriculum and teaching adjustments as deemed necessary.

No Child Left Behind - Adequate Yearly Progress

Did your school make AYP in reading?	Yes	Math?	Yes
How many targets does your school have?	12	Met?	12

Based on this school's academic performance, your child may be eligible for one or more of the following; ask your school if your child qualifies for:

Extra academic instruction either before or after-school, or in the summer
Mentoring

For additional information regarding Adequate Yearly Progress please visit
<http://www.cde.state.co.us/FedPrograms/ayp/index.asp>

How Liberty Common Charter School Compares To Elementary Schools Within A 75-Mile Radius

School	Program Type	Academic Performance	Academic Growth
Ridgeview Classical Charter Schools	Charter	High	Typical
Riffenburgh Elementary School		High	Typical
Laurel Elementary School		Average	Low
Harris Bilingual Elementary School		Average	High
Shepardson Elementary School		High	High
O'Dea Elementary School		High	Typical
Tavelli Elementary School		High	Typical
Linton Elementary School		High	Typical
Dunn Elementary School		Excellent	High
Kruse Elementary School		High	High

ABOUT OUR STAFF

School Employment

Each year, your district reports to the Colorado Department of Education on the number of adults who work in your school, as well as the type of work they do. Last year, your school employed:

	Your School		District	
	Full Time	Part Time	Full Time	Part Time
Teachers	30	2	1350	232
Paraprofessionals	8	4	449	201
Administrators	2	0	94	8
Other Professionals	1	4	180	86
School Support	7	1	612	191
School Counselors	0	0	48	26
School Librarians	0	1	28	7
Total Staff	60		3406	

Students per Teacher Ratio

	Student Enrollment	Students per Teacher
Grade 1	58	23.2
Grade 2	59	23.2
Grade 3	58	21.7
Grade 4	58	21.5
Grade 5	58	16.3

Professional Experience of Teachers

	Your School	District
Average years of teaching experience	9	11
Percent of teachers teaching in the subject in which they received their degree	N/A	N/A
Number of teachers with Masters or Doctoral degrees	12	879
Teachers with 3 years or more of teaching experience	28	1297
Teachers with less than 3 years of teaching experience	4	285
Number of professional development days	11	4

Salaries

	Your School	District	State
Average Teacher Salary	\$37,715	\$47,380	\$47,494
Average Administrator Salary	\$71,412	\$90,845	\$80,444

Principal: Russell Spicer

Number of years as Principal at this school: 7

Number of years as Principal at any school: 9